

TM-VI-273, Y+PI10  
 8.110  
 8.090  
 7.906  
 7.284  
 7.665  
 7.645  
 7.115  
 7.097  
 7.079

4.282  
 4.265  
 4.247  
 4.229  
 3.843  
 3.621  
 3.608  
 3.427  
 3.409  
 2.078  
 2.073  
 2.067  
 2.062  
 2.056  
 1.306  
 1.276  
 1.258  
 1.240  
 1.154  
 1.143  
 1.137  
 1.126  
 1.108  
 0.897

# Av-400C

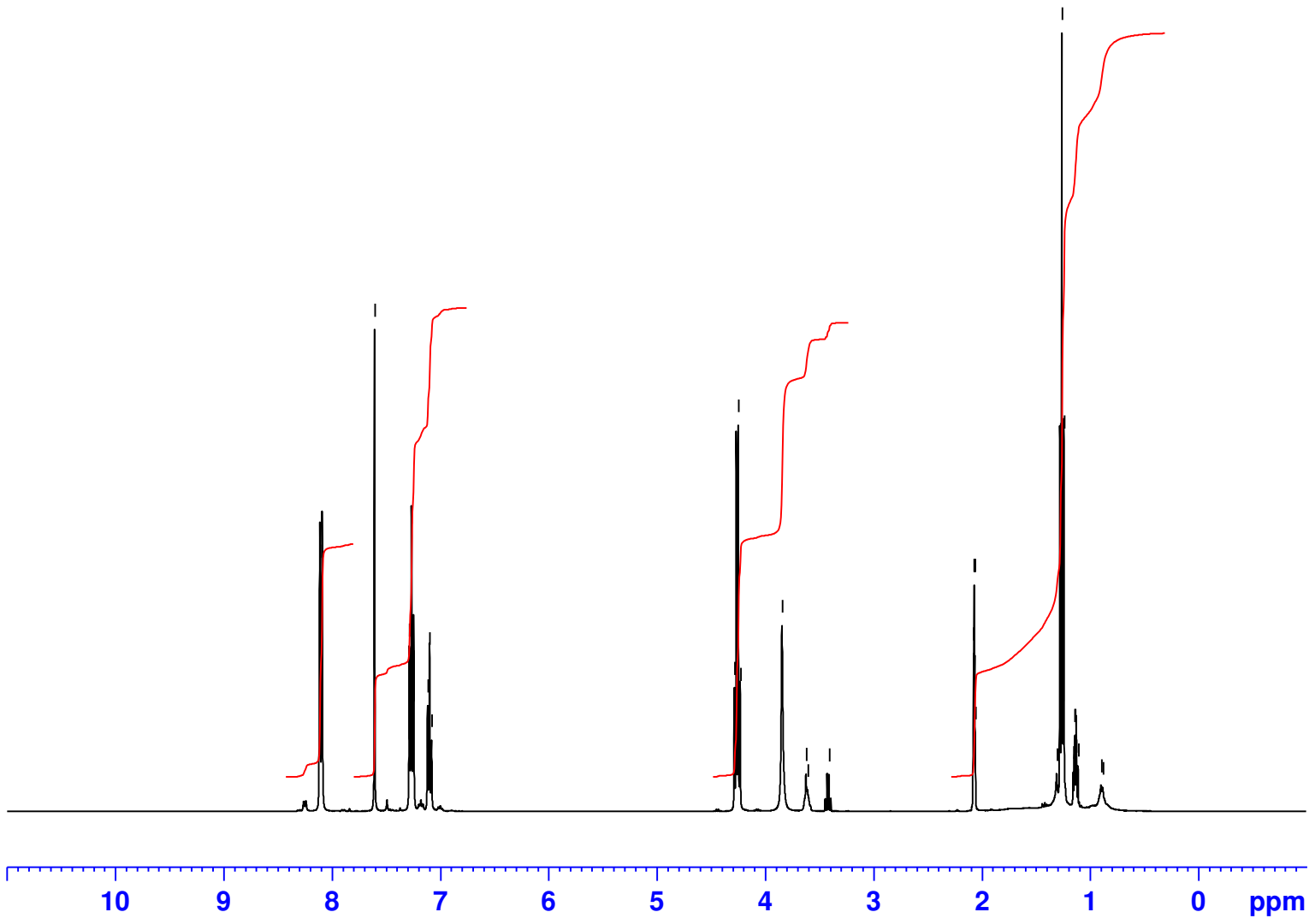
```

Current Data Parameters
NAME           Mar02-2022
EXPNO          20
PROCNO         1

F2 - Acquisition Parameters
Date_          20220302
Time           17.34
INSTRUM        spect
PROBHD         5 mm PABBO BB/
PULPROG        zg30
TD             32768
SOLVENT        Acetone
NS             16
DS             2
SWH            8012.820 Hz
FIDRES         0.244532 Hz
AQ            2.0447233 sec
RG            126.26
DW            62.400 usec
DE            6.50 usec
TE            294.7 K
D1            1.00000000 sec
TD0           1

===== CHANNEL f1 =====
SFO1          400.2024012 MHz
NUC1           1H
P1            11.25 usec
PLW1          19.95299911 W

F2 - Processing parameters
SI            32768
SF            400.2000000 MHz
WDW           EM
SSB           0
LB            0.30 Hz
GB            0
PC            1.00
  
```



Integration values (in red):

- 12.26 (for peaks at ~8.1 ppm)
- 24.69 (for peaks at ~7.3 ppm)
- 23.92 (for peaks at ~4.2 ppm)
- 39.14 (for peaks at ~1.2 ppm)