

Auftraggeber Maulide

hazh71

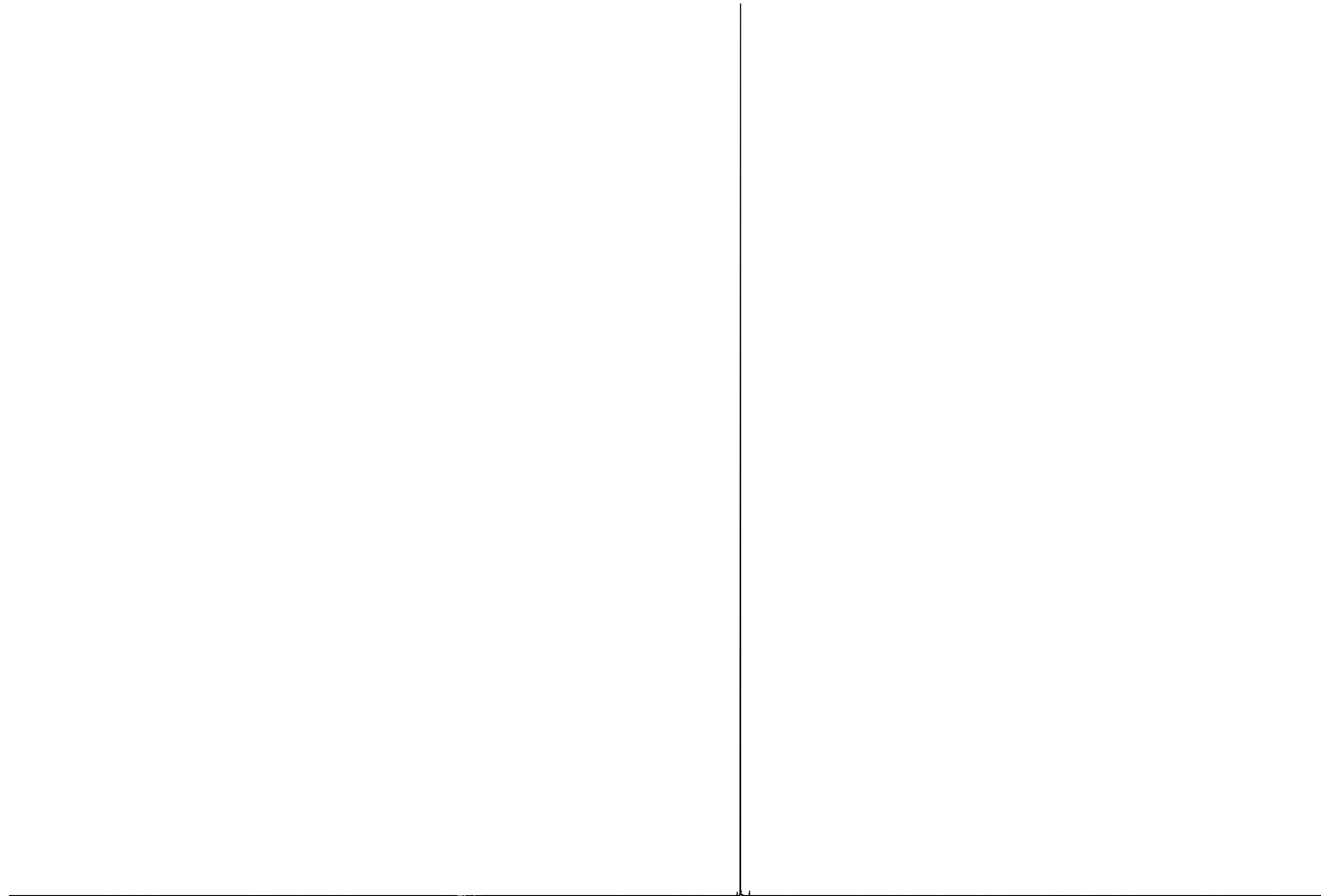


-65.26
-78.08
-78.11
-78.15
-78.16
-78.16
-78.17
-78.17
-78.17
-78.18
-78.18
-78.18
-78.19
-78.19
-78.19
-78.20
-78.20
-78.21
-78.21
-78.22
-78.22
-78.23
-78.23
-78.23
-78.24
-78.24
-78.24
-78.24
-78.25
-78.25
-78.26
-78.26
-78.26
-78.27
-78.27
-78.27
-78.28
-78.28
-78.28
-78.29
-78.29
-78.29
-78.30
-78.30
-78.30
-78.31
-78.31
-78.31
-78.32
-78.32
-78.32
-78.33
-78.33
-78.33
-78.63
-78.63
-79.60

Current Data Parameters
NAME 6Jul2519
EXPNO 25
PROCNO 1

F2 - Acquisition Parameters
Date_ 20190725
Time 10.03 h
INSTRUM spect
PROBHD z126545_0016 (
PULPROG zgflqn
TD 88632
SOLVENT CDC13
NS 16
DS 4
SWH 34090.910 Hz
FIDRES 0.769269 Hz
AQ 1.2999361 sec
RG 57
DW 14.667 usec
DE 18.00 usec
TE 298.2 K
D1 1.00000000 sec
TD0 1
SFO1 564.7569411 MHz
NUC1 19F
P1 15.00 usec
PLW1 24.00000000 W

F2 - Processing parameters
SI 65536
SF 564.7993010 MHz
WDW EM
SSB 0
LB 0.30 Hz
GB 0
PC 1.00



-50 -55 -60 -65 -70 -75 -80 -85 -90 -95 -100 ppm

0.59

9.41