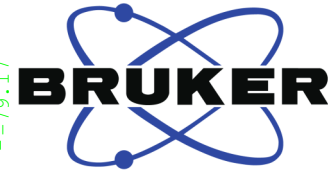


Auftraggeber Maulide

hazh40

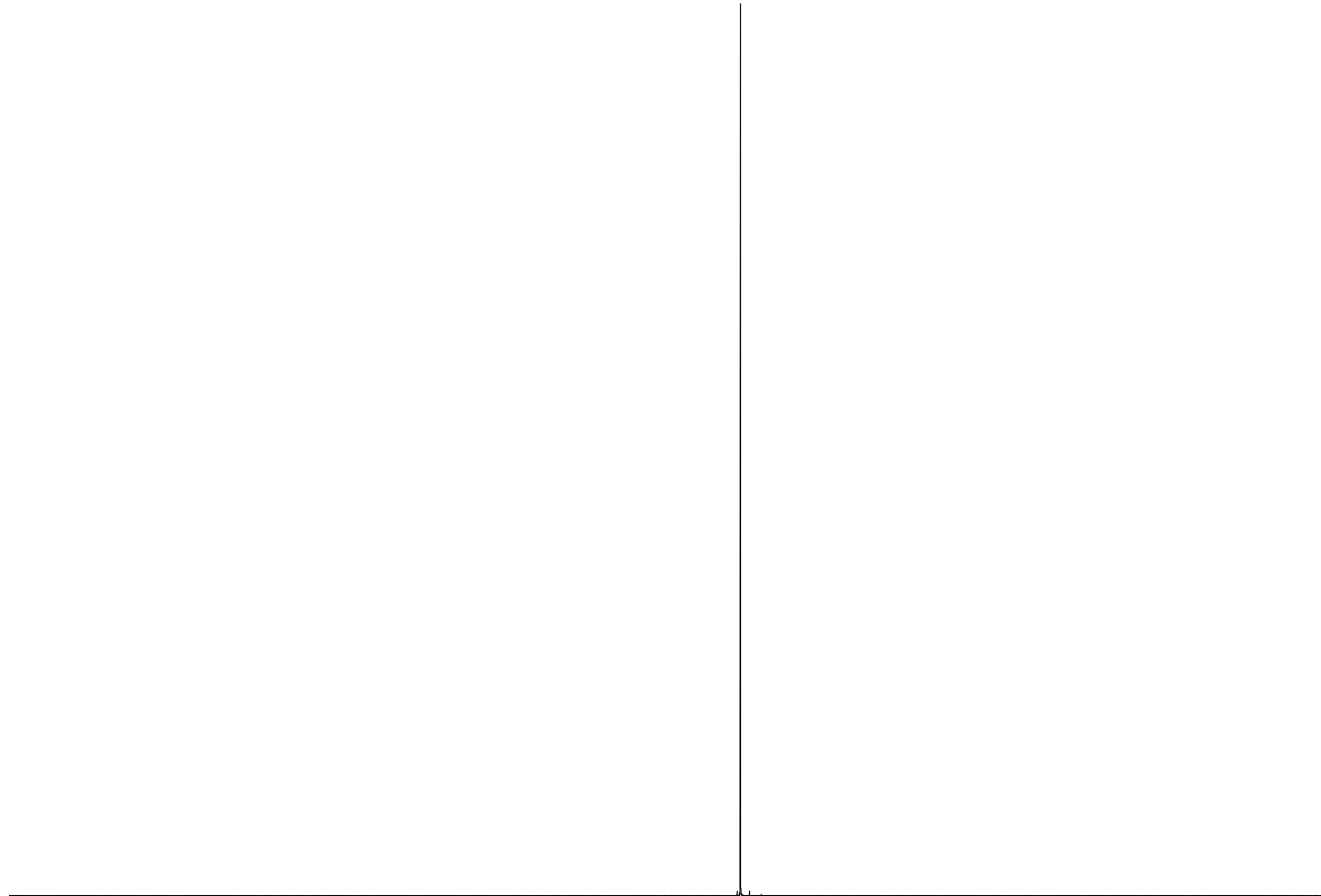


-78.08  
-78.08  
-78.11  
-78.15  
-78.16  
-78.16  
-78.17  
-78.17  
-78.17  
-78.18  
-78.18  
-78.18  
-78.19  
-78.19  
-78.19  
-78.20  
-78.20  
-78.20  
-78.21  
-78.22  
-78.22  
-78.23  
-78.23  
-78.23  
-78.24  
-78.24  
-78.24  
-78.25  
-78.25  
-78.25  
-78.25  
-78.26  
-78.26  
-78.26  
-78.27  
-78.27  
-78.27  
-78.27  
-78.28  
-78.28  
-78.28  
-78.28  
-78.29  
-78.29  
-78.29  
-78.30  
-78.30  
-78.30  
-78.30  
-78.63  
-79.17

Current Data Parameters  
NAME 6Jul2519  
EXPNO 15  
PROCNO 1

F2 - Acquisition Parameters  
Date\_ 20190725  
Time 9.12 h  
INSTRUM spect  
PROBHD z126545\_0016 (  
PULPROG zgflqn  
TD 61360  
SOLVENT CDC13  
NS 16  
DS 4  
SWH 34090.910 Hz  
FIDRES 1.111177 Hz  
AQ 0.8999467 sec  
RG 57  
DW 14.667 usec  
DE 18.00 usec  
TE 298.2 K  
D1 1.00000000 sec  
TD0 1  
SFO1 564.7569411 MHz  
NUC1 19F  
P1 15.00 usec  
PLW1 24.00000000 W

F2 - Processing parameters  
SI 65536  
SF 564.7993010 MHz  
WDW EM  
SSB 0  
LB 0.30 Hz  
GB 0  
PC 1.00



-50 -55 -60 -65 -70 -75 -80 -85 -90 -95 -100 ppm

1.00