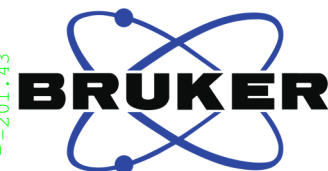


Auftraggeber Maulide

hazh 54

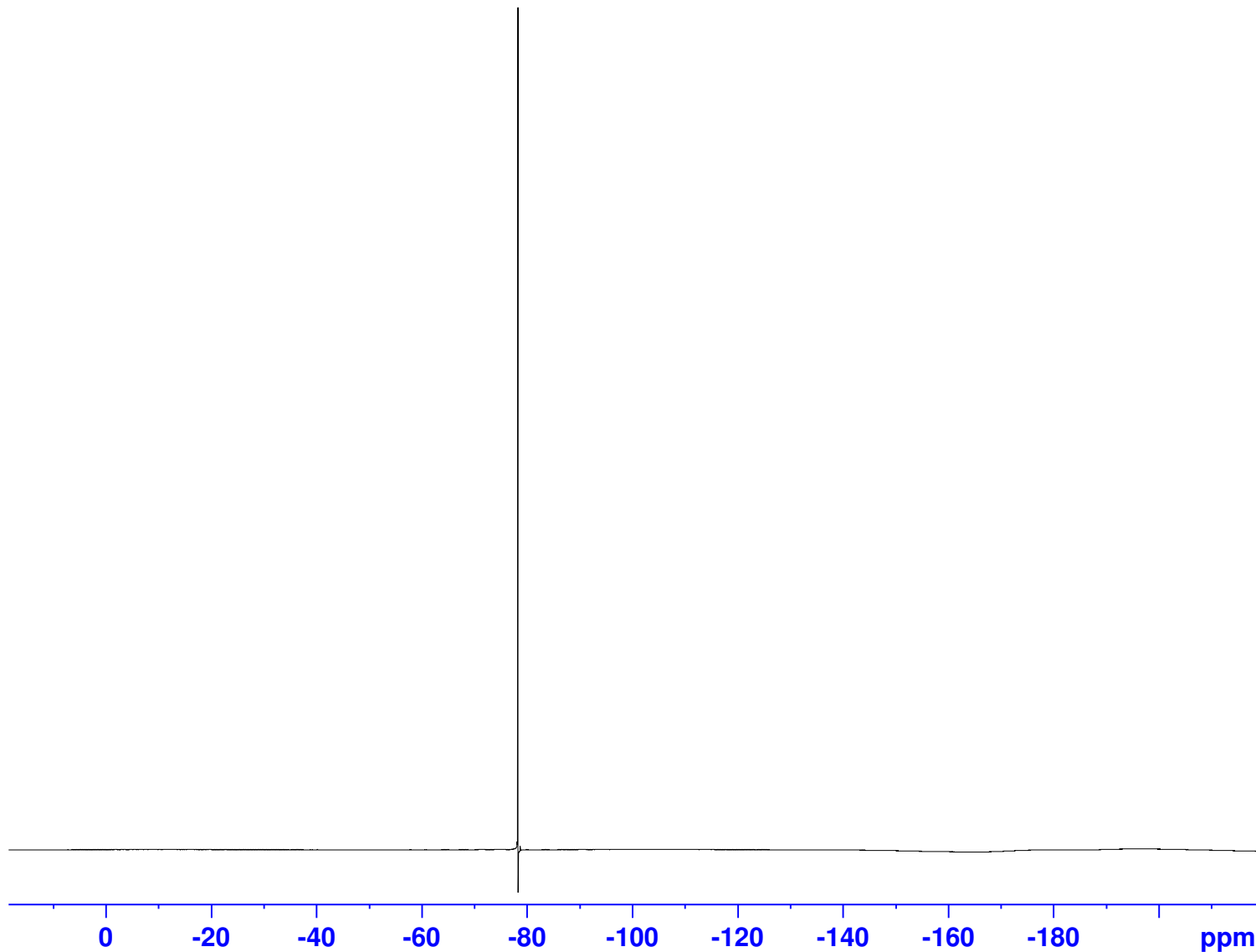
-77.17
-77.47
-77.56
-77.52
-77.54
-77.58
-77.62
-77.70
-78.08
-78.23
-78.65
-191.68
-191.81
-192.08
-192.23
-192.66
-192.83
-192.96
-193.06
-193.39
-193.47
-193.52
-193.62
-193.67
-193.89
-194.05
-194.15
-194.39
-194.43
-194.46
-194.66
-194.80
-194.87
-195.01
-195.13
-195.32
-195.59
-195.82
-196.13
-196.51
-196.55
-196.62
-196.83
-197.21
-197.32
-197.43
-197.49
-197.62
-197.93
-197.98
-198.07
-198.27
-198.38
-198.45
-198.90
-199.03
-199.05
-199.11
-199.34
-199.56
-200.43
-200.55
-200.73
-200.82
-201.03
-201.43



Current Data Parameters
NAME 6Jul0219
EXPNO 25
PROCNO 1

F2 - Acquisition Parameters
Date_ 20190702
Time 11.00 h
INSTRUM spect
PROBHD z126545_0016 (
PULPROG zgflqn
TD 131072
SOLVENT CDC13
NS 16
DS 4
SWH 133928.578 Hz
FIDRES 2.043588 Hz
AQ 0.4893355 sec
RG 18
DW 3.733 usec
DE 18.00 usec
TE 298.1 K
D1 1.00000000 sec
TD0 1
SFO1 564.7428211 MHz
NUC1 19F
P1 15.00 usec
PLW1 24.00000000 W

F2 - Processing parameters
SI 65536
SF 564.7993010 MHz
WDW EM
SSB 0
LB 0.30 Hz
GB 0
PC 1.00



8.85

1.15