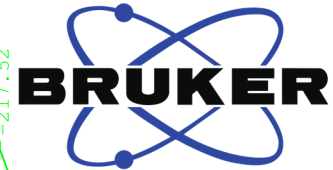


Auftraggeber Maulide

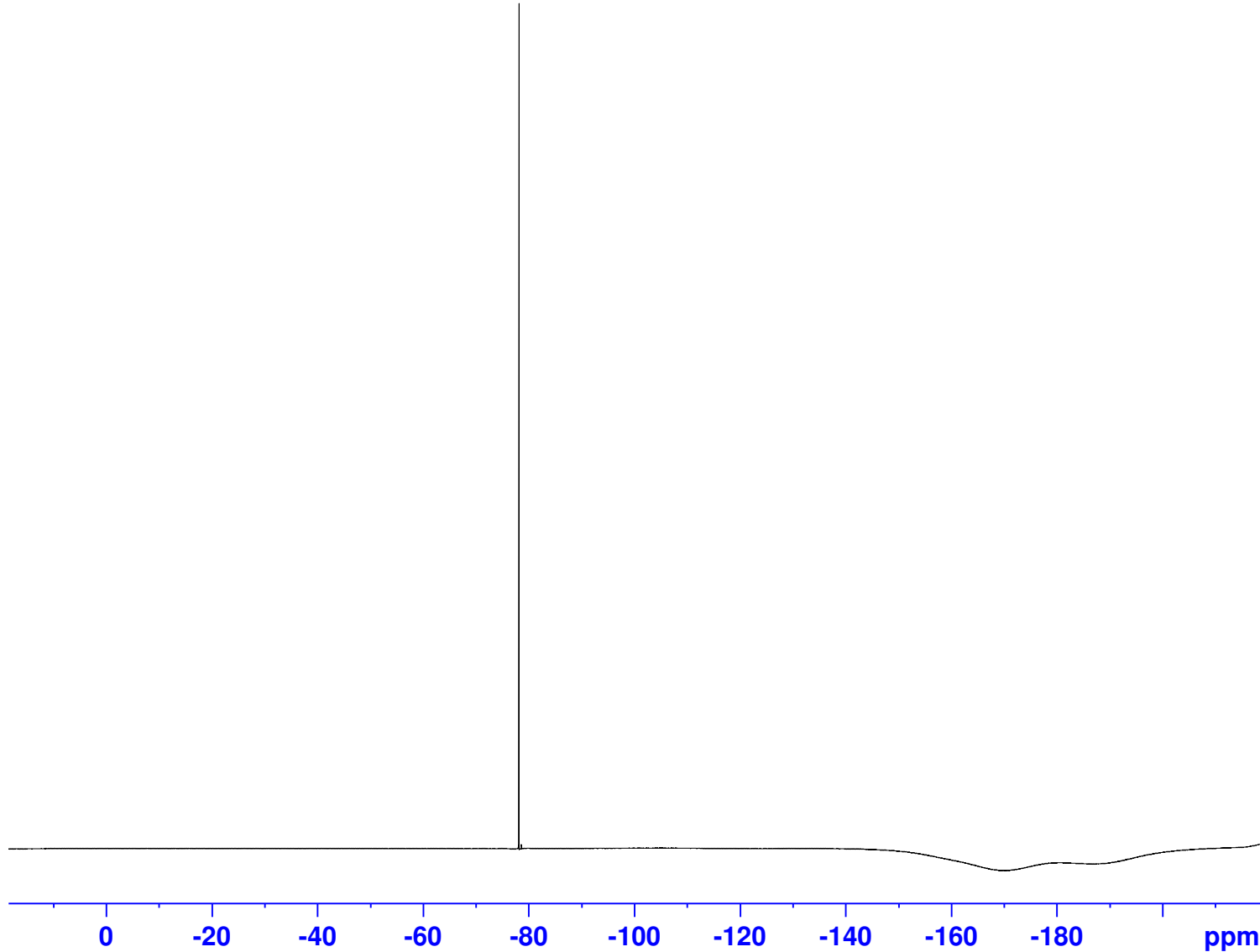
hazh 15102  
-78.03  
-78.18  
-78.66  
-99.00  
-99.99  
-100.6  
-100.8  
-100.95  
-101.2  
-101.42  
-102.42  
-102.68  
-103.49  
-103.88  
-103.99  
-104.18  
-104.24  
-104.37  
-104.46  
-104.78  
-104.87  
-105.02  
-105.16  
-105.22  
-105.32  
-105.43  
-105.46  
-105.96  
-106.24  
-106.41  
-107.00  
-107.11  
-107.39  
-107.55  
-107.74  
-108.00  
-211.08  
-211.37  
-211.53  
-211.59  
-212.11  
-212.21  
-212.51  
-212.66  
-212.74  
-212.98  
-213.43  
-213.80  
-213.91  
-214.00  
-214.34  
-214.41  
-214.74  
-214.84  
-214.99  
-215.11  
-215.22  
-215.28  
-215.47  
-215.87  
-216.11  
-216.25  
-216.41  
-216.43  
-216.60  
-217.19  
-217.52



Current Data Parameters  
NAME 60Oct0419  
EXPNO 106  
PROCNO 1

F2 - Acquisition Parameters  
Date\_ 20191004  
Time 17.34 h  
INSTRUM spect  
PROBHD z126545\_0016 (  
PULPROG zgflqn  
TD 131072  
SOLVENT CDC13  
NS 16  
DS 4  
SWH 133928.578 Hz  
FIDRES 2.043588 Hz  
AQ 0.4893355 sec  
RG 18  
DW 3.733 usec  
DE 18.00 usec  
TE 298.2 K  
D1 1.00000000 sec  
TD0 1  
SFO1 564.7428211 MHz  
NUC1 19F  
P1 15.00 usec  
PLW1 24.00000000 W

F2 - Processing parameters  
SI 65536  
SF 564.7993010 MHz  
WDW EM  
SSB 0  
LB 0.30 Hz  
GB 0  
PC 1.00



8.85

6.65

4.50